

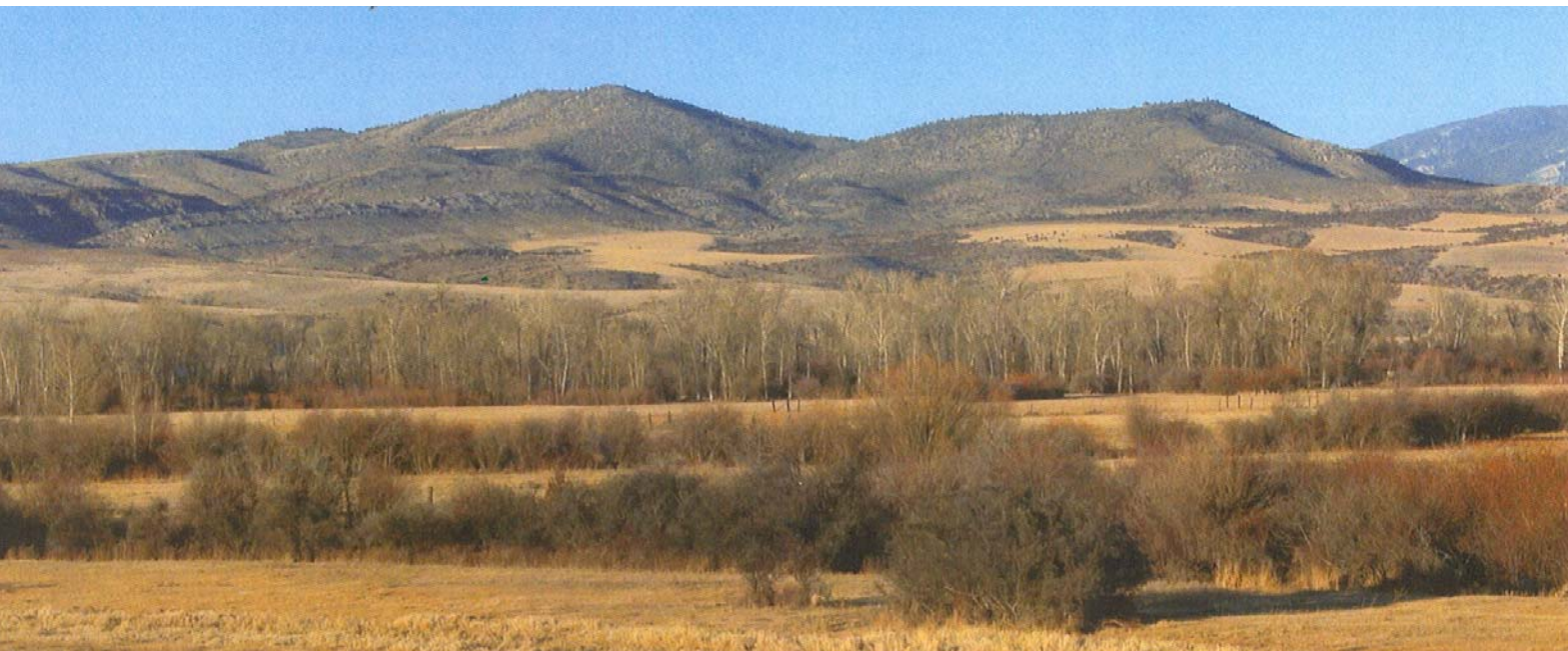
The assets of the trust now exceed \$20,600,000 with grants funded from interest generated by the principal. Two independent oversight boards, a Joint State-Federal Board and a Citizen Advisory Board, are responsible for ensuring the goals of the Trust are met. Board meetings are open to the public and public participation is encouraged.

Grants are considered and awarded annually. Granting cycles begin in February with awards announced in June. Information on the application process is available by contacting :

Montana Fish & Wildlife Conservation Trust  
PO Box 1993  
Helena, MT 59624  
Phone: (406)458-0389 or Email: fwctrust@mtwf.org.

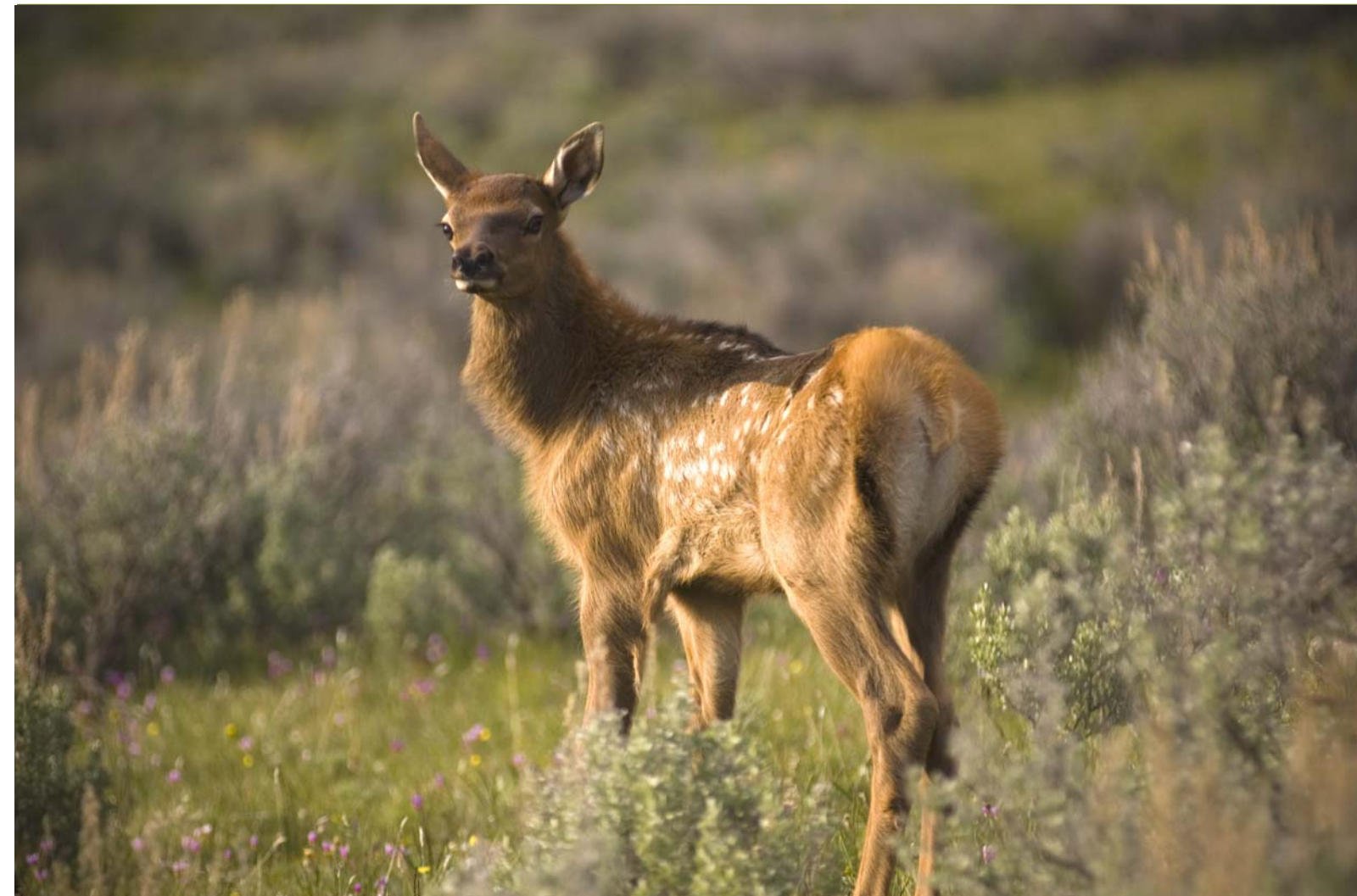
Annual Report  
Fall 2007

# Montana Fish & Wildlife Conservation Trust



Oyler Ranch

Montana Fish & Wildlife Conservation Trust  
Citizen's Advisory Board  Joint State-Federal Board



Total Grants Awarded—\$1,763,000  
Helping to Restore and Conserve Important Fish & Wildlife Habitat!

Restoring and Conserving Fish & Wildlife Habitat  
Improving Access to Public Lands





**What is Montana Fish & Wildlife Conservation Trust?**

The Montana Fish & Wildlife Conservation Trust (Public Law 105-277) was established by the United States Congress in 1998, and was funded by proceeds from the sale of federally leased cabin sites on Canyon Ferry Reservoir. The purpose of this trust is to provide a permanent source of funding

for the acquisition of publicly accessible land in Montana in order to:

- Restore and conserve fisheries habitat, including riparian habitat;
- Restore and conserve wildlife habitat;

- Enhance public hunting, fishing and recreational opportunities;
- Improve public access to public lands.

The initial cabin-sale value of this trust began at \$14,945,403. The current trust value is approximately \$20,600,000.

Selway Creek



Crow Creek Falls



Selway Creek



Mt. Ascension

**Citizen's Advisory Board**

- Bill Orsello - Represents Hunting
- John Gibson - Represents Fishing
- Chuck Hahn - Represents Landowners
- Jay Erickson - Represents Conservationists

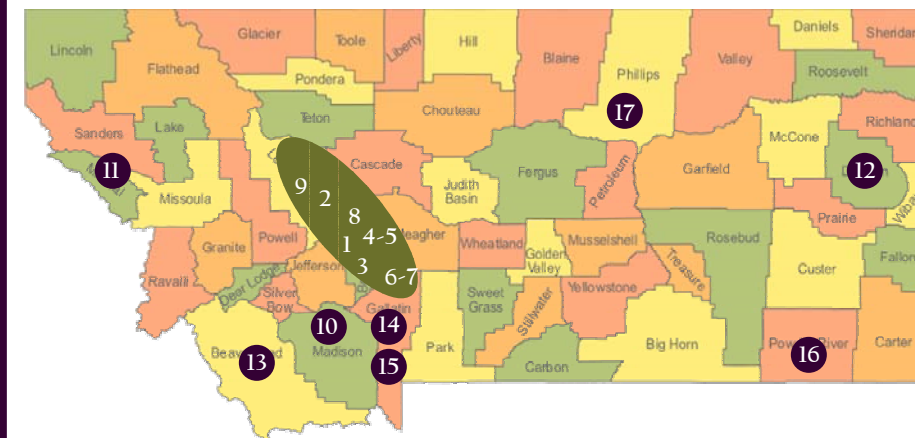
**Contact Information**  
 Bill Orsello, Chair  
 borsello@bresnan.net

**Trust Manager**  
 Montana Fish, Wildlife & Parks Foundation  
 PO Box 200701  
 Helena, MT 59620-0701

**Joint State-Federal Board**

- Mike Cole - USDA Forest Service
- Gary Sullivan - US Fish & Wildlife Service
- Mike Korn - Montana Fish, Wildlife & Parks
- Rick Hotaling - Bureau of Land Management
- Mike Collins - Bureau of Reclamation

**Contact Information**  
 Mike Cole, Chair  
 mlcole@fs.fed.us  
 (406)266-3425



● Target Area—Upper Missouri River Area ● Outside of Target Area  
 Not more than 50 percent of the income from the Trust in any year shall be used outside the watershed of the Missouri River in the State, from Holter Dam upstream to the confluence of the Jefferson River, Gallatin River and Madison River.

**“Conservation is a state of harmony between men and land.”**

—Aldo Leopold, 1949

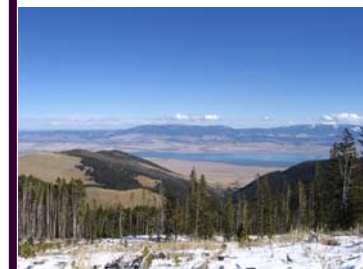


**Projects Awarded Through 2006 in Target Area Upper Missouri River Area**

	<b>Awarded</b>	<b>Acres</b>	<b>Year</b>
1. Crow Creek Falls—Crow Creek Falls Group	\$ 75,000	20	2004
2. Lake Helena Land Conservation Easement—Montana Audubon, Prickly Pear Land Trust	\$ 130,000	2,500	2004
3. Mountain Dude Land Acquisition—RMEF	\$ 5,000	21	2005
4. Winston Livestock Phase I—RMEF	\$ 5,000	253	2005
5. Winston Livestock Phase II—RMEF	\$ 30,000	170	2006
6. Iron Mask Phase I—RMEF	\$240,000	480	2006
7. Iron Mask Phase II—RMEF, BLM, TCF	\$300,000	600	2006
8. Mt. Ascension—Prickly Pear Land Trust	\$ 125,000	40	2006
9. Corridor of Discovery Recreational Trail—Prickly Pear Land Trust	\$ 110,000	rail-line	2006
<b>Total Inside Target Area</b>	<b>\$1,020,000</b>	<b>4,084 +</b>	



Winston



Mountain Dude



Iron Mask

**Projects Awarded Through 2006 Outside of Target Area**

	<b>Awarded</b>	<b>Acres</b>	<b>Year</b>
10. German Gulch—George Grant Chapter/Trout Unlimited	\$ 41,000	82	2005
11. Cedar Creek Land Acquisition—Five Valley Land Trust	\$ 104,000	204	2006
12. Black Bridge Recreation—Walleyes Unlimited	\$ 60,000	71	2006
13. Selway Creek—Trust for Public Lands	\$250,000	1,280	2006
14. Oyler Ranch—Trust for Public Lands	\$ 190,000	587	2006
15. Lost Creek—Fish, Wildlife & Parks (MFWP)	\$ 30,000	5	2006
16. Rooney Easment—MFWP	\$ 18,000	2	2006
17. Upland & Wetland Habitat Gallatin Valley Pheasants Forever Chapter	\$ 50,000	1,194	2006
<b>Total Outside Target Area</b>	<b>743,000</b>	<b>3,425</b>	